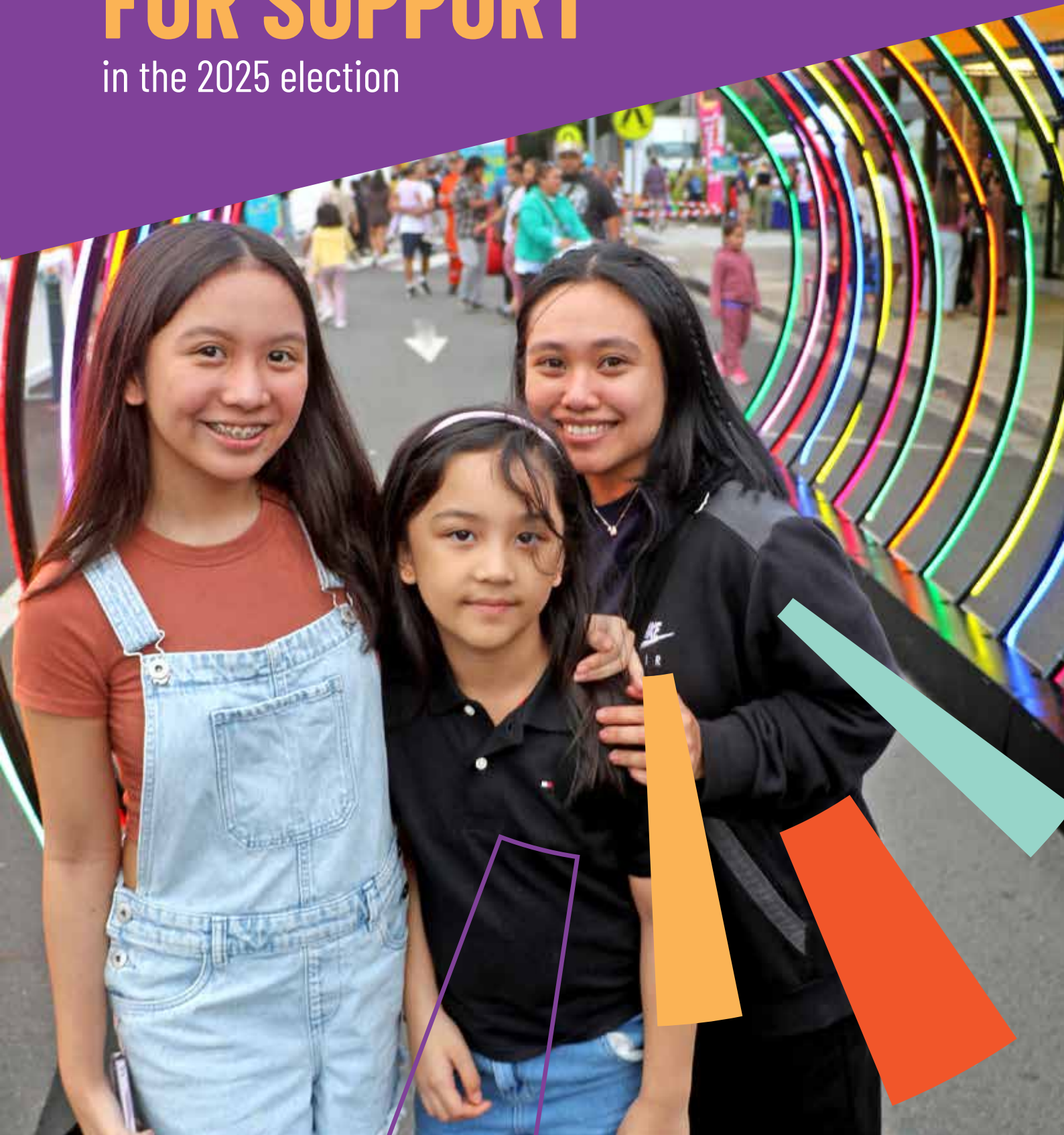


CAMPBELLTOWN CITY COUNCIL

OUR CALL TO THE FEDERAL GOVERNMENT FOR SUPPORT

in the 2025 election





**WE CALL ON YOUR
COMMITMENT IN THE
UPCOMING ELECTION TO
SUPPORT OUR PRIORITY
INITIATIVES AND
DELIVER KEY OUTCOMES
FOR OUR CITY**

CAMPBELLTOWN IS AT THE EPICENTRE OF THE MOST SIGNIFICANT GROWTH CORRIDOR IN NSW – THE MACARTHUR REGION IN S/W SYDNEY

As the metropolitan centre of the Macarthur Region, investment in Campbelltown enables the Federal government to meet key policy initiatives:

- 1. REALISE THE INVESTMENT IN WESTERN SYDNEY INTERNATIONAL AIRPORT:** through connecting the fastest growing region in Australia to the airport, the Australian government can leverage connections to industry, skilled workers, travellers and tourism.
- 2. ACHIEVE NET-ZERO:** through investing in public transport for our region, government may reduce car dependency, stabilise Vehicle Kilometres Travelled, and reduce embodied carbon.
- 3. SUPPLY HOMES:** the Macarthur Region has the capacity to deliver 120,000 homes if accompanied by supporting infrastructure. This is 10% of Australia's entire target, and 32% of NSW's contribution under the National Housing Accord.

CAMPBELLTOWN IS THE SOLUTION TO ACHIEVING KEY POLICY OBJECTIVES; WESTERN SYDNEY INTERNATIONAL AIRPORT - ACHIEVING NET-ZERO AND THE SUPPLY OF MUCH NEEDED HOMES.



WE NEED THE SUPPORT OF THE INCOMING FEDERAL GOVERNMENT TO DELIVER THESE OUTCOMES THROUGH THE INITIATIVES DETAILED IN THIS CALL FOR SUPPORT.

INITIATIVES SUMMARY:

1. COMMUNITY AND JUSTICE PRECINCT:

invest in the development of a Federal Circuit and Family Court of Australia to make family law services easy to access for Western Sydney.

2. DELIVER METRO RAIL:

to connect us to Western Sydney International Airport.

3. A GROWTH ENABLING TRANSPORT NETWORK:

commit to deliver essential transport infrastructure for one of the fastest growing regions in the country.



INITIATIVE 1: SOUTH WEST SYDNEY COMMUNITY AND JUSTICE PRECINCT

The NSW Government has committed to working with us to expand the NSW District, Local and Children's Courts within the Community and Justice Precinct, in Campbelltown.

The Western Parkland City does not currently host a permanent court of federal jurisdiction. Our Region's community is forced to travel outside of the Western Parkland City to access family dispute resolution services, often hours away from their home, disrupting families during an already tumultuous time in their lives.

The Community and Justice Precinct provides an opportunity for better access to family dispute services, closer to home, adjacent to other courts and complementary services.

This will support the attraction of higher order jobs to Western Sydney.



INITIATIVE 2: DELIVER METRO RAIL TO CONNECT US TO WESTERN SYDNEY INTERNATIONAL AIRPORT

We need the Federal Government's commitment to the rail connection from Western Sydney International Airport to:

1. Glenfield (via Leppington extension)
2. Campbelltown-Macarthur

These connections would ensure Macarthur residents can easily access employment opportunities at our new airport, move around the region via public transport, and maximise the draw of Campbelltown as a destination.

70% of cars parked at Campbelltown train station are from outside Campbelltown LGA, mainly Camden and Wollondilly. With a metro connection from Western Sydney International Airport to Campbelltown, these residents could access Campbelltown City Centre via public transport, liberating the commuter carpark land to be utilised for better economic purposes.

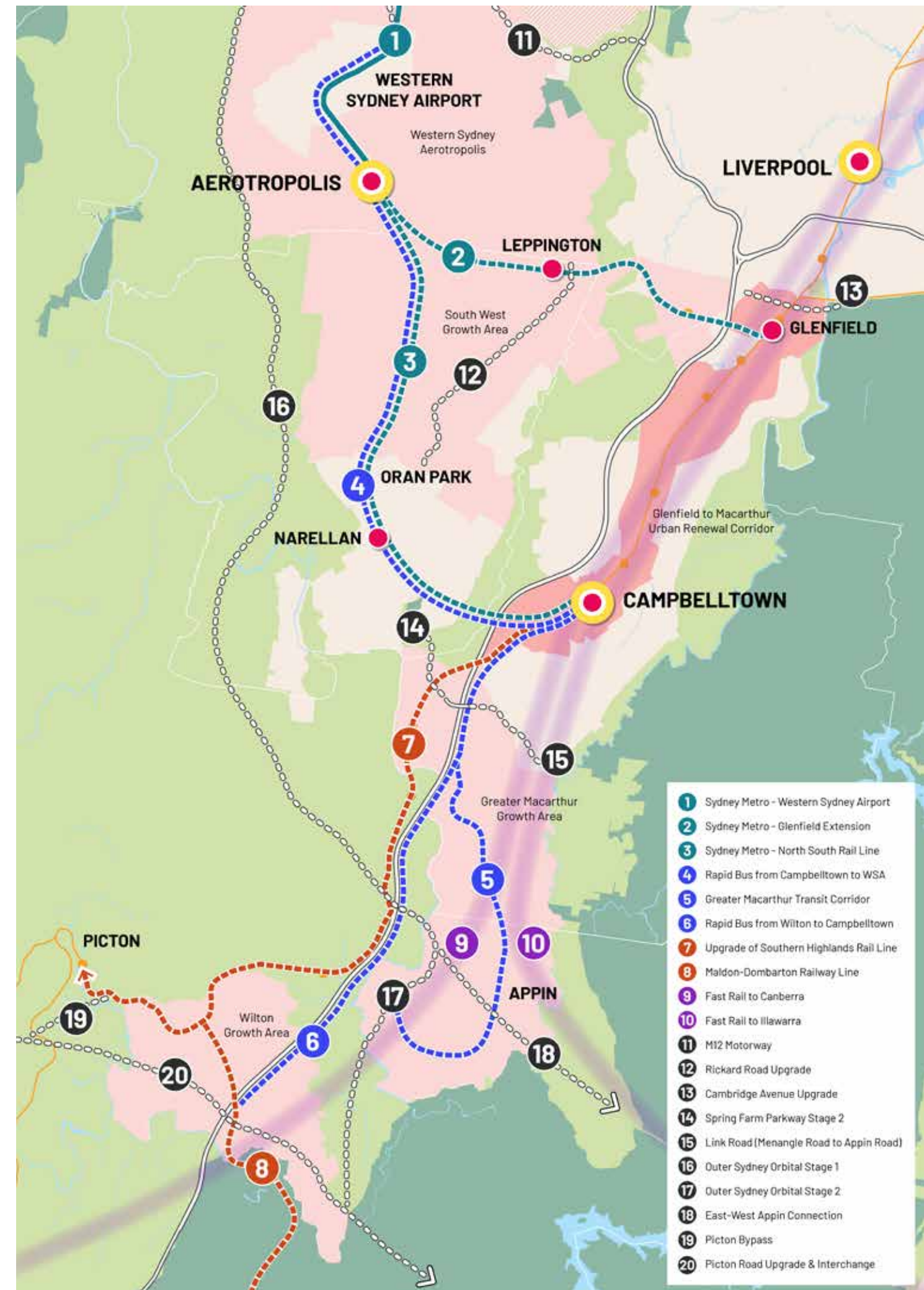


INITIATIVE 3: A GROWTH-ENABLING TRANSPORT NETWORK

Residents of the Macarthur region have suffered for years from a lack of ongoing investment in critical public transport and road infrastructure. Not only does this leave our city centre congested, it makes the population more dependent on private vehicles to access jobs, healthcare, education and other services. The traffic impacts the vibrancy of our city centre and discourages business investment and job creation in Campbelltown. It contributes to poor health outcomes for our community as they are stuck in traffic for hours each day.

We need an integrated and efficient transport network to support our growing community, including:

- a. Rapid bus to Western Sydney Airport: that is fast, legible, frequent and safe.
- b. The full Spring Farm Parkway: from Appin Road (Link Road) to the M31, south facing ramps, and on to Liz Kernahan Drive to support the Greater Macarthur Growth Area
- c. Greater Macarthur Transit Corridor to enable public transport into the Greater Macarthur Growth Area's greenfield developments
- d. Cambridge Avenue, Glenfield: to support the Moorebank Intermodal and NSW Government delivered housing release in Glenfield
- e. Fast Rail to Canberra and the Illawarra, with an interchange at Campbelltown.







CAMPBELLTOWN