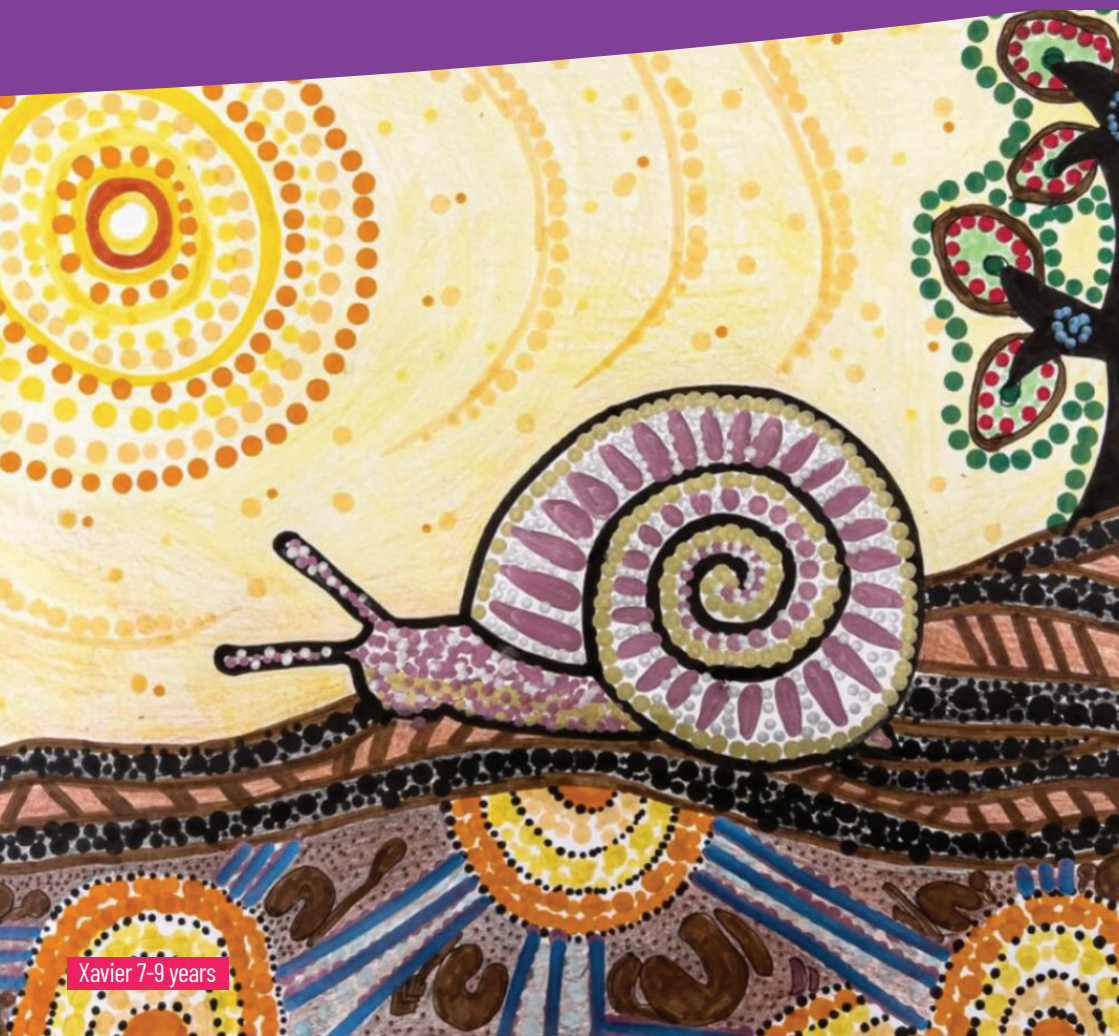


**THREATENED SPECIES**  
**ART &  
WRITING**  
**COMPETITION**

**TEACHER RESOURCE KIT**



Xavier 7-9 years



## Contents

How do schools enter their artwork?	6
How do schools enter their creative writing story?	7
Some artworks from 2023...	8
Prizes	10
- Artwork	
- Creative writing	
Award ceremony	11
Classroom learning	12
Inspiration	13
Extension activities	14
How can your school become a haven for native flora and fauna?	16
A local treasure!	18
Become an Eco-School!	19

# Eastern Free Tail Bat

Wing span is about 11 inches across

large ears

Thumb

Body upto 4 inches long

Hairless leathery Wing with 5 fingers

Tail

## It's Diet:



Beetle



cockroach



Ant

By: Zoe Burrell

Zoe 10-12 years

The Macarthur region, our backyard, is home to a wide diversity of native plants and animals. Many of these plants and animals are affected by a range of impacts such as habitat loss, competition and predation from non-native species and foreign diseases. There are a range of species occurring within the local region that are at risk of extinction and have been listed as 'Threatened Species.'

The Threatened Species Art and Writing Competition (*TSAC*) is a regional environmental education program, involving Campbelltown City Council, Camden Council and Wollondilly Shire Council. The competition celebrates Biodiversity Month (*September*) and Threatened Species Day on 7 September.

The competition targets all stages of primary school, and is open to young people aged 5-12. TSAC encourages students to learn about a local threatened species and represent it in an artwork or creative writing piece.

The competition is now in its 17<sup>th</sup> year and through its cross-curricula nature has been successfully engaging primary schools in Geography, Science, Visual Arts and English throughout the Macarthur region.

## HOW DO SCHOOLS ENTER THEIR ARTWORK?

The competition raises awareness of Biodiversity Month, the TSAC encourages schools to engage and enter as many students as possible. Schools have the opportunity to win prizes and students can also win individual prizes based on their age category.

We want you to create an artwork that celebrates the beauty and uniqueness of our threatened plants, animals and pollinators.

Entering the competition is easy. Simply complete the entry form with your artwork and enter online by visiting your local Council's website, or drop it off or post it to your local Council.

- **Campbelltown City Council Civic Centre**

Customer Service Desk,  
Cnr Queen and Broughton Streets,  
Campbelltown

- **Camden Council Administration Building**

Customer Service Desk  
70 Central Avenue, Oran Park

- **Wollondilly Council Administration Building**

Customer Service Desk,  
62-64 Menangle Street, Picton

### **By post:**

Campbelltown City Council Threatened  
Species Competition  
PO Box 57  
Campbelltown NSW 2560

Camden Council  
PO BOX 183  
Camden NSW 2570

Wollondilly Council  
PO Box 21  
Picton NSW 2571

### **Enter online**

[campbelltown.nsw.gov.au/tsac](http://campbelltown.nsw.gov.au/tsac)  
[wollondilly.nsw.gov.au](http://wollondilly.nsw.gov.au)  
[camden.nsw.gov.au](http://camden.nsw.gov.au)

### **Things to remember:**

- A4 Artwork Entries will be judged in the following age groups:
  - 5 to 6 years
  - 7 to 9 years
  - 10 to 12 years
  - 13 to 16 years
- Get as creative as you like with your artwork, use any mediums such as paint, pen, pencil, charcoal, textiles, digital, recycled items.
- If you choose to enter your class under one entry form, Council asks that you label the back of each artwork with:
  - Student name
  - Class
  - Age



## HOW DO SCHOOLS ENTER THEIR CREATIVE WRITING STORIES?

We encourage students to write a short story that celebrates the beauty and uniqueness of our threatened plants, animals and pollinators. The childrens' stories can be as creative as they like, but the stories should include one or more of the following facts:

- where does the plant, animal or pollinator live?
- for animals or pollinators, what do they eat?
- what threats do they face?
- what can people do to help save them from extinction?

Entry is open to writers aged 8 to 12 years.

We ask that:

- the stories be written so that they can be read to 5-6 years olds.
- the stories must be restricted to one A4 page (one side only).

Creative writing criteria

- 50% for three or more accurate facts about the chosen species
- 20% creativity
- 10% grammar
- 10% structure (beginning, middle and end)

Entering the competition is easy. Each story must be accompanied by a completed entry form. Please either drop the entries or post them to your local Council:

Students can also submit their work via the online portal. Please request students list their school's name on their entry form.

- **Campbelltown City Council**  
**Civic Centre**  
Customer Service Desk,  
Cnr Queen and Broughton Streets,  
Campbelltown
- **Camden Council**  
Customer Service Desk,  
Administration Building  
70 Central Avenue, Oran Park
- **Wollondilly Council**  
Administration Building  
Customer Service Desk,  
62-64 Menangle Street, Picton

### Enter online

[campbelltown.nsw.gov.au/tsac](http://campbelltown.nsw.gov.au/tsac)

[wollondilly.nsw.gov.au](http://wollondilly.nsw.gov.au)

[camden.nsw.gov.au](http://camden.nsw.gov.au)

### Campbelltown City Council

Threatened Species Competition,  
PO Box 57, CAMPBELLTOWN NSW 2560

### Camden Council

PO BOX 183  
Camden NSW 2570

### Wollondilly Council

PO Box 21  
Picton NSW 2571

## SOME OF THE ARTWORKS FROM 2023

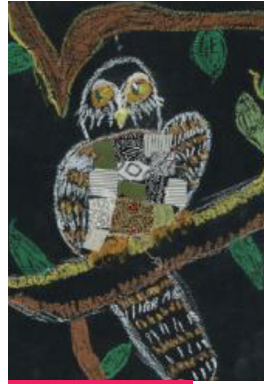


11 years - Zahli Erwin





5 years - Rafael Kurup



6 years - Dotti Hamilton



7 years - Lily Davies



8 years - Summer Shaw



11 years - Rui Seneviratne

## PRIZE FOR WINNING SCHOOL

### Artwork

The school that has the highest percentage of students entered into the competition will win the TSAC School Prize Package. The school prize package is designed to support schools to continue with biodiversity education following the conclusion of the competition.



## AWARD CEREMONY

The competition will once again have an awards ceremony to celebrate winning individuals, placeholders and winning schools. Fittingly, the awards ceremony will take place on **Thursday 5 September**, and be hosted by the Australian PlantBank at the Australian Botanic Garden, Mount Annan.

The PlantBank is a science and conservation facility, boasting one of the most diverse places on the planet, “the seed vault”, which holds seed collections from many of Australia’s 25,000 plant species, including 25% of NSW’s Threatened Species.

Refreshments will be served on arrival as you view the winning artworks on display.

Winning schools, placeholders and individuals will be notified once the artworks have been judged.

Schools in the running to receive the School’s prize will be invited to send two staff members to attend the Award Ceremony.



Abigail 10-12years

## CLASSROOM LEARNING EARLY

The cross-curricular nature of the TSAC allows for many different educational activities that can link into HSIE, Science and Visual Arts. See Extension Activities for practical educational examples.

Curriculum outcome links

### Stage 1

Geography	GE1-1	GE1-2		
Science	ST1-2VA	ST1-9ES	ST1-11LW	ST1-14BE
Visual Arts	VAS 1.1	VAS 1.2	VAS 1.4	

### Stage 2

Geography	GE2-1	GE2-2	GE2-3	
Science	ST2-2VA	ST2-8ES	ST2-11LW	
Visual Arts	VAS 2.1	VAS 2.4		

### Stage 3

Geography	GE3-1	GE3-2	GE3-3		
Science	ST3-2VA	ST3-10LW	ST3-11LW		
Visual Arts	VAS 3.1	VAS 3.2	VAS 3.3	VAS 3.4	
English	EN3-1A	EN3.2A	EN3-4A	EN3-7C	EN3-8D

## ARTWORK INSPIRATION

There are many different mediums that children can use to create their artwork!

Here are some options:

- hand or finger painting
- felt pens
- textiles
- digital
- clay
- fabric



## EXTENSION ACTIVITIES

The following are a list of activities that can be done in and outside the classroom prior to, during, or as extension activities for the TSAC:

- **Museum exhibition**

Imagine your artwork is going to be displayed as part of a museum exhibition.

Create some signs and additional artefacts that will teach others about the threatened species.

You might like to include information such as its scientific name, distribution, life cycle, interesting features and common threats.

- **Nature rubbings**

Walk around outdoors to collect various textured objects. These could include leaves, tree bark, rocks etc. To make a rubbing, place a piece of paper on top of the object. Rub the paper gently with crayons until textures appear. The object and its texture will be 'imprinted' on the paper. You might like to use the rubbings or collage of rubbings in your competition artwork.

- **Native Plant Seed Bank**

Scan the QR code or visit the ABC Splash website and watch the video clip about the native plant seed bank ([splash.abc.net.au](http://splash.abc.net.au)). Research a local threatened plant species and find out where it is found, threats it faces and what is being done to conserve it.



- **Nature charades**

What is it like to be a tree? How does a baby animal feel? Get an understanding of different parts of the environment by pretending that you are those parts. Natural objects: a plant or rock. Animal: Baby bird, flying fox, squirrel glider. Present event: wind blowing through the trees, land clearing.

- **Make a difference**

Research some environmental groups that help protect and conserve Australian biodiversity. Locate a local group and learn how they are helping protect threatened species. Groups might include Bushcare, Macarthur National Parks Association or the Macarthur Centre for Sustainable Living. From this, you might be inspired to join local events or possibly to start your own environmental group.

- **Native garden**

Design a native garden for home or school. Identify some local plant species that could be planted to attract wildlife. Did you know that Council supplies each school with native tubestock species as part of National Tree Day, which will be held occurring this year on Sunday 31 July. (For schools the date is Friday 29 July).



- **Weed warriors**

Investigate a local invasive species that threatens native habitat. Create a poster to educate others about the problems caused by this weed and alternatives that can be planted in the garden.

- **Aboriginal significance**

Research local plant species and identify a plant that is culturally significant to local Aboriginal people. pollinators in your school grounds that have cultural significance. Draw a detailed diagram of the plant and identify its parts and how they are used.

To have help with this, you can contact the Tharawal Local Aboriginal Land Council (LALC). The LALC work with the Campbelltown, Wollondilly, Camden and Liverpool communities, empowering both indigenous and non-indigenous people in traditional ecological knowledge.

If you like getting outdoors and learning about our native plants and animals, and being in a team of people that helps to protect these species and improve their habitat, contact your Council's Environment team to see how you can get involved!



## HOW CAN YOUR SCHOOL BECOME A HAVEN FOR NATIVE FLORA AND FAUNA?

There are many ways in which your school can become a haven for native flora and fauna.

- **Design a native garden for home or school**  
Identify some local plant species that could be planted to attract wildlife. Did you know that your Council supplies each school with free native plant species as part of National Tree Day. Contact your local Council for more information about how to receive the plants.
- **Leave dead wood and rocks in the bush**  
Although dead wood and rocks might not seem like much to us, plants and animals use these things as shelter and a source of food. This is why it is important that we leave these things where they lie.
- **Join a community group, such as a local Bushcare group**  
If you like to get outdoors and spend time in the bush or other natural environments you can contact Council to see what fun activities you could get involved in with your family and friends on the weekend.
- **Set up your own eco-warrior team at school**  
Together, you and your team could become the eco-champions of your school. Through posters, group discussions and assembly announcements you can ensure that the whole school is aware of the threatened plant, animals and pollinators that call your school home.

- **Remove known weed species from your garden and replace them with local native plants**

Sometimes our gardens are full of plants that are not native to our country, and they prevent our native plants from growing. We call these plants weeds. By removing weeds and planting native plants you are helping not only the plants but the native animals and pollinators that need these plants to survive.

Through the TSAC, you will learn about many native plants that you can plant in your garden!

- **Visit a local national park or nature reserve**  
Getting outdoors and visiting our local protected areas to recreate and grow environmental appreciation. These areas are important places to protect for the community.

The Macarthur region has some beautiful natural areas to visit. To find out all about the areas you can visit each Council's website, or contact them and they can give you all the information you need to get out there and enjoy the natural environment.

Ruixi He

Squirrel Glider



11yrs, 5T, Harrington Park Public School

## A LOCAL TREASURE!

### Cumberland Plain Woodland - A Critically Endangered Ecological Community

Prior to European settlement, much of Western Sydney, including the Macarthur region, would have been draped in the unique Cumberland Plain Woodland Community, consisting of a mix of large gum trees, patchy shrubs and grasses.

This rare woodland community provides habitat to a wide range of native plants and animals, forming vital areas of habitat within a wildlife corridor that has the potential to connect the bushland between the Georges and Nepean River.

Due to land clearing for farming and houses it is estimated that only around 6% of the original bushland remains in small patches scattered across the Cumberland Plain. Along with clearing, weeds are one of the biggest threats facing these patches of bush.

The Cumberland Plain Woodland Community provides habitat for a range of threatened plant and animal species including:

- Koala
- Grey-headed Flying Fox
- Cumberland Plain Land Snail
- Diamond Firetail Finch
- Spiked Rice flower

Many parks and reserves in the Macarthur region contain Cumberland Plain Woodland communities. You may like to visit one of these areas:

- Ingleburn Reserve, Ingleburn
- Noorumba Reserve, Rosemeadow
- Australian Botanic Garden Mt Annan

#### Did you know?

It's not only dogs that can play dead. Many of the ground species of the Cumberland Plain Woodland have thick rootstocks, in the form of taproot systems, underground tubers and the like.

This allows the plant to survive even if it looks dead after severe weather conditions such as drought or fire.

## BECOME AN ECO-SCHOOL!

Eco-Schools is an international program of the Foundation for Environmental Education (FEE), and aims to empower students to be the change our sustainable world needs by engaging them in fun, action-orientated learning. Australia is the 55th country to launch this program and it gives Australian schools the opportunity to develop and improve the environmental management of the school, underpinned by curriculum development and community engagement in environment and sustainability themes.

### Eco-schools Australia schools will have access to the following...

1. Gain full access to Eco-Schools Australia website
2. Eco-Schools 7-Step framework guidelines and resource templates
3. Practical case studies written by Australian Eco-Schools – the who, what, how, where and when of being an Eco-School
4. Action project and lesson ideas, organised by sustainability themes
5. Eco-Schools Awards applications and the ability to apply for Eco-Schools Awards
6. Teaching resource sharing forum
7. Eco-Schools Profile Page to store Eco-Schools data and awards submissions
8. School Search – connect with other Eco-Schools in Australia and view their environmental education initiatives.

To register to become an Eco-School, there is a \$110 (*incl. GST*) annual registration fee. This fee gives you access to everything listed above.

The Macarthur region has been the first in Australia to take on board the Eco-School program. It is now in over 100 schools throughout Australia. To know more about the Eco-School program visit [eco-schools.org.au](http://eco-schools.org.au)

### Sustainability and Environmental Educators Network SEED

Are you passionate about sustainability and the environment in your school?

Interested in receiving more information about the environmental education workshops and programs we offer?

Please do not hesitate to register your interest in the local Sustainability and Environmental Educators Networks!

For Campbelltown City Council: [open.space@campbelltown.nsw.gov.au](mailto:open.space@campbelltown.nsw.gov.au)

For Camden Council: [sustainability@camden.nsw.gov.au](mailto:sustainability@camden.nsw.gov.au)



## Swift Parrot

Beautiful colours of  
yellow, red and green  
You'll find me nesting in  
Eucalyptus trees.

I love to eat the nectar  
that they make  
And sometimes I like to  
share with my mates.

My mates and I, we love  
to fly from Tasmania to  
Victoria, in hopes to find,  
A place to live, which is  
sometimes hard,  
SO we need to fly to  
somewhere less sparse.

Buildings and roads are  
taking our homes  
Which sadly means we have  
less space to roam.

We are what you call  
"critically endangered",  
which means we need  
humans to save us.

I want to be able to  
continue to fly  
High high up in the big  
blue sky

I hope you can listen to  
our sweet parrot tune  
From the early mornings  
to the afternoon

Alexandra Culic



## References

Australian Museum – Biodiversity information and the work of the museum  
[australianmuseum.net.au/biodiversity](http://australianmuseum.net.au/biodiversity)

American Museum of Natural History – Interactive games, video and resources for kids about biodiversity  
[amnh.org/explore/ology/biodiversity](http://amnh.org/explore/ology/biodiversity)

Arkive – A gallery of images and information on threatened species. A number of lesson plans and student activities are also available  
[arkive.org](http://arkive.org)

Backyard Buddies – Foundation of National Parks & Wildlife program to promote the protection of native animals in suburban areas  
[backyardbuddies.net.au/](http://backyardbuddies.net.au/)

Birds in Backyards – tips and resources for encouraging native bird habitats in suburban areas  
[birdsinsuburbanbackyards.net/](http://birdsinsuburbanbackyards.net/)

Living Macarthur Sustainable Living Guide – Articles on a range of sustainable actions including native gardens and promoting biodiversity  
[livingmacarthur.com.au/](http://livingmacarthur.com.au/)

Macarthur Centre for Sustainable Living – A not-for-profit educational facility that allows the community to explore sustainable living options with activities such as tours, festivals, markets, workshops, research, art, food, gardening and music.  
[mcsf.org.au](http://mcsf.org.au)

Royal Botanic Gardens and Domain Trust - Information about Cumberland Plain Woodland ecology  
[rbgsyd.nsw.gov.au/welcome/australian\\_botanic\\_garden/the\\_garden/feature\\_gardens/cumberland\\_plain\\_woodland](http://rbgsyd.nsw.gov.au/welcome/australian_botanic_garden/the_garden/feature_gardens/cumberland_plain_woodland)





Camden Council  
P 4654 7777  
W [camden.nsw.gov.au](http://camden.nsw.gov.au)



Wollondilly Shire Council  
P 4677 1122  
W [wollondilly.nsw.gov.au](http://wollondilly.nsw.gov.au)



Campbelltown City Council  
P 4645 4000  
W [campbelltown.nsw.gov.au](http://campbelltown.nsw.gov.au)

